

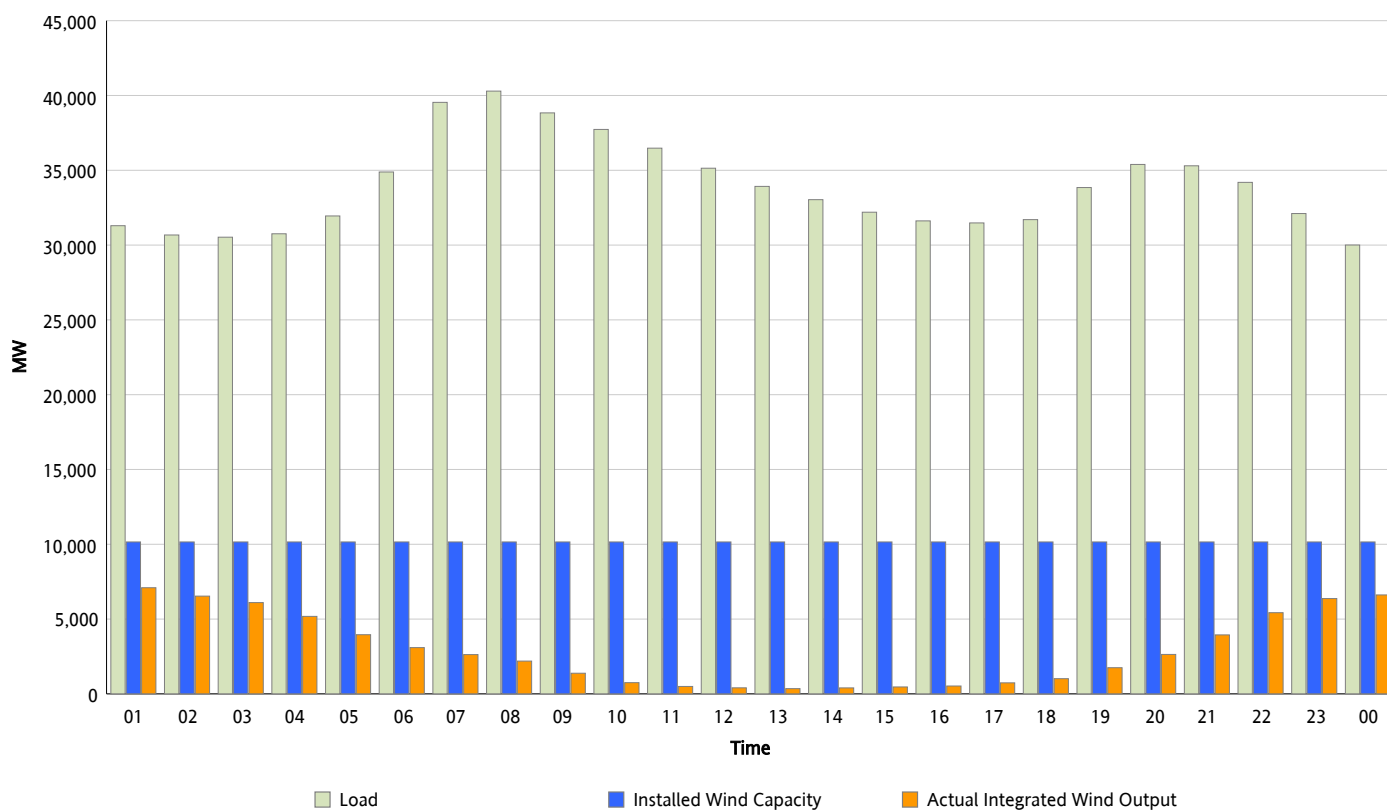


## ERCOT Grid Operations

### Wind Integration Report : 02/26/2013

Peak Load	40,291 MW
Load Peak Hour (HE)	08
Wind Over Peak	2,191 MW
Wind Record 02/09/13	9,481 MW
Max Wind Value*	7,536 MW
Wind Peak Time	00:00
Wind Integration %	23.73 %

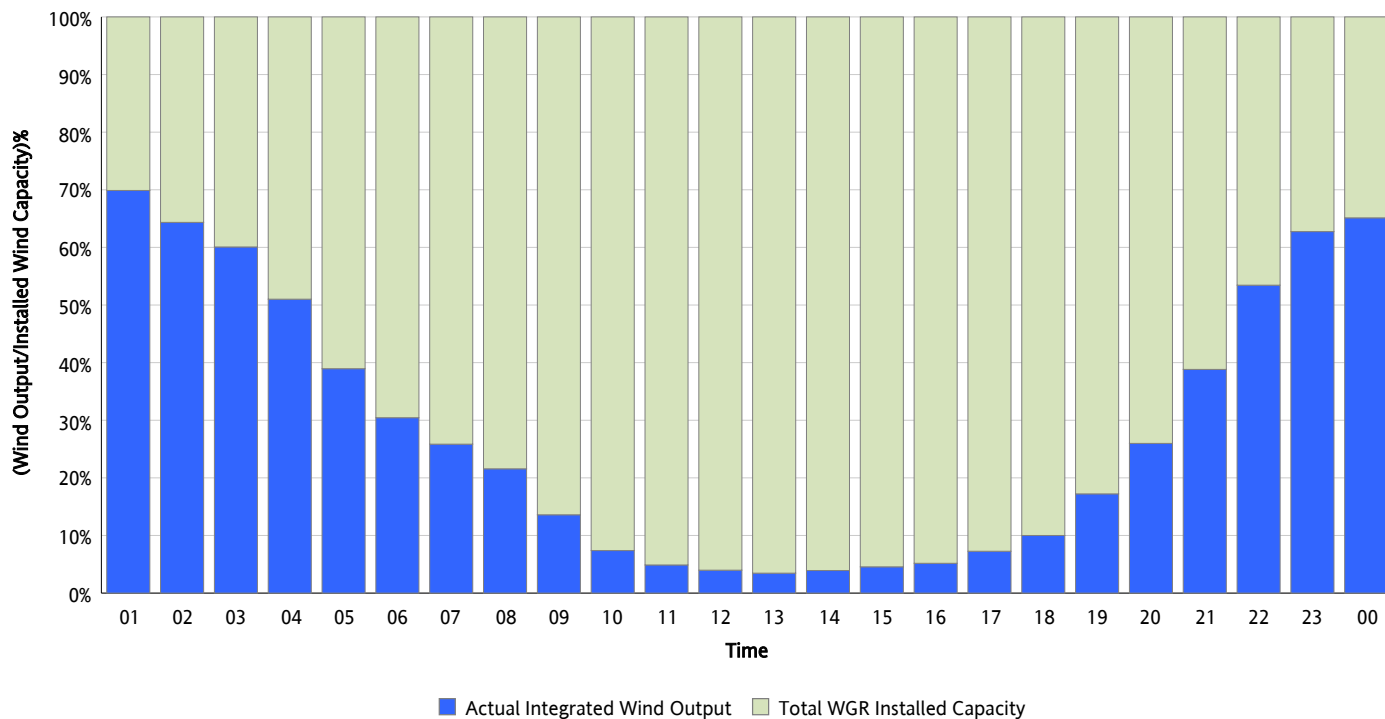
**Hourly Average Actual Load vs. Actual Wind Output**  
**02/26/2013**



*\* Wind Record and Wind Max represent instantaneous values and the rest of the values are integrated over the hour*

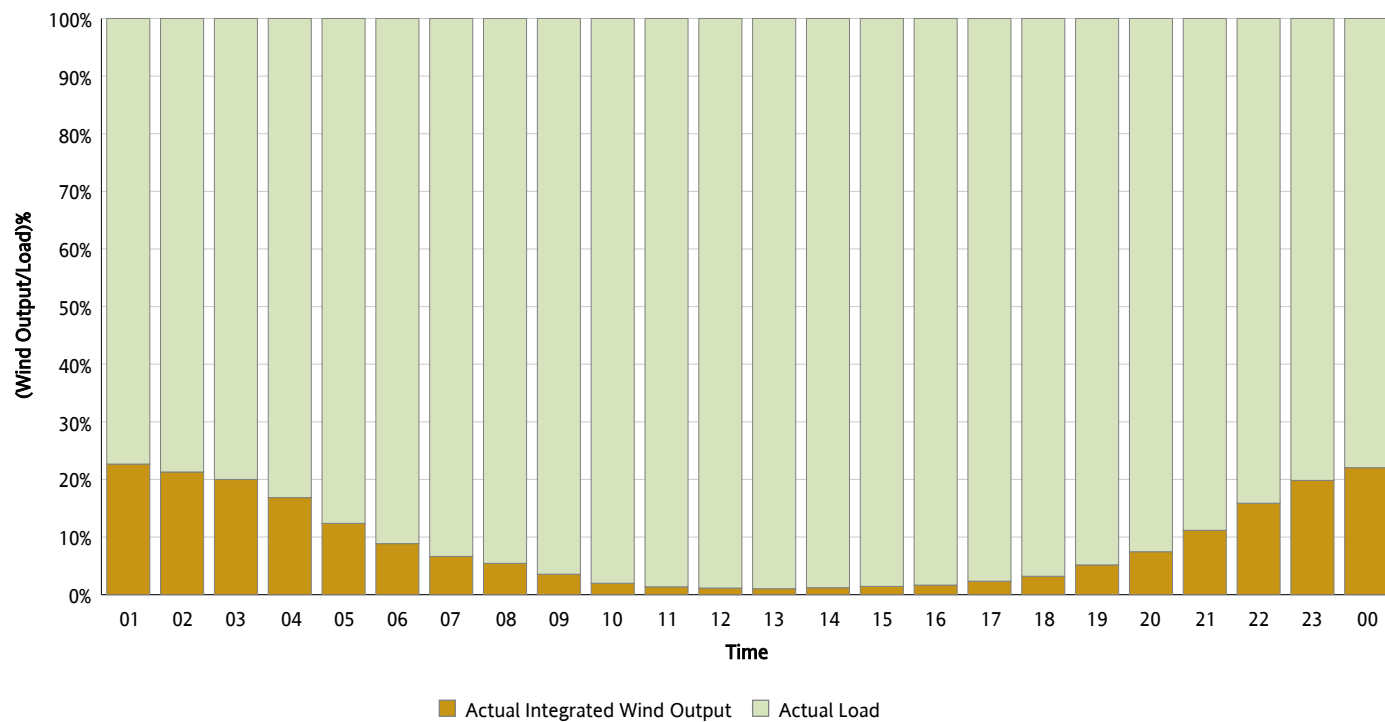
## Actual Wind Output as a Percentage of the Total Installed Wind Capacity

02/26/2013



## Actual Wind Output as a Percentage of the ERCOT Load

02/26/2013



## ERCOT Load vs. Actual Wind Output

02/19/2013 - 02/26/2013

